



# Network Video Recorder

Quick Start Guide

## Statement

This manual describes only the basic operations. In order to adapt to different types, this manual won't list for each specific operation. Our company reserves the right of final interpretation of it.

## Part 1 Basic Operations

### 1-Log in

After the device boots up, the user must login and the system provide the corresponding functions according to the permissions of the logged user.

When the device is delivered, there are two preset users: admin and guest, no password by default. The factory preset user of admin is with superuser privileges; The factory preset user of guest is permissions for preview and video playback.



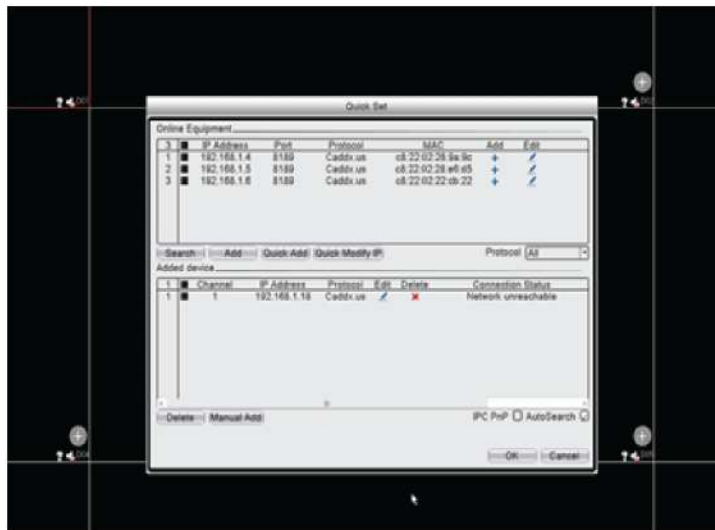
**Password Protection:** If the password is entered wrong for 7 times consecutively, there will be alarm to lock the account(after the system reboot or half an hour, the locked account will be unlocked automatically). For security reasons, please change the user name and password in the “User Management” in time.

# Installation

## Add IPC.2

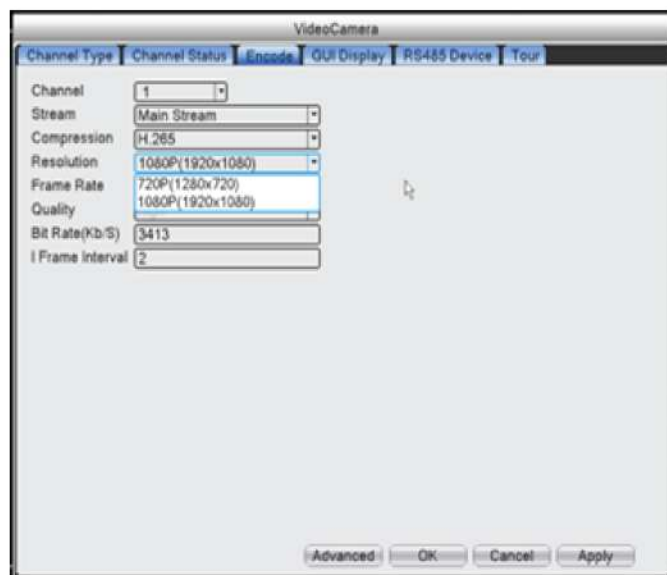
Ways:

- 1-Right click ->Remote device->Quick add
- 2-Right click -> Manual add orMain menu->System-> Remote device, as below.



## 3-Encoding settings

By setting the encoding parameters, it achieves the high-quality playback and remote monitoring capabilities. By the following means, you can find the interface of the feature settings: [Main menu]> [System]> [Encoding]; the interface is as follows.

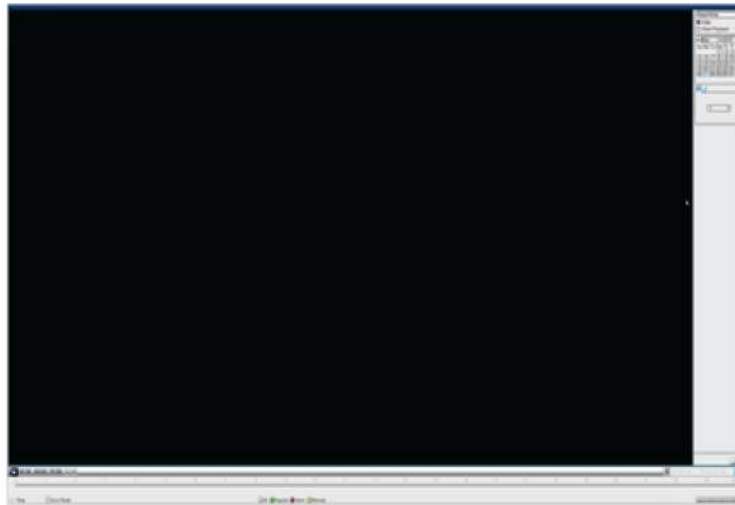


# Installation

## 4-Video playback

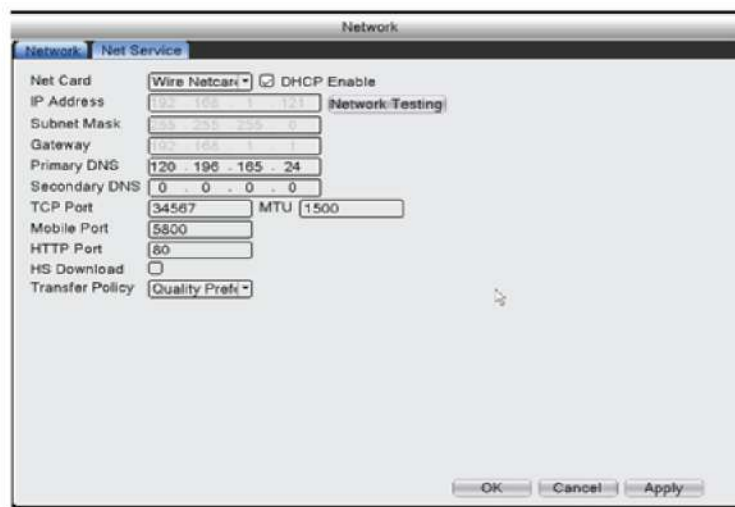
Video playback includes video query, playback and other operations. Ways to open the video playback are as follows.

The first way is: Right-click in the preview screen, pop-up a menu, and select [Video playback] in the menu; The second way is: Main menu] > [Recording] > [playback]. The interface of playback is as follows]:



## 5-Network settings

By [Main menu]> [System]> [Network], you can make the native network settings



# Installation

## 6-Motion detection settings

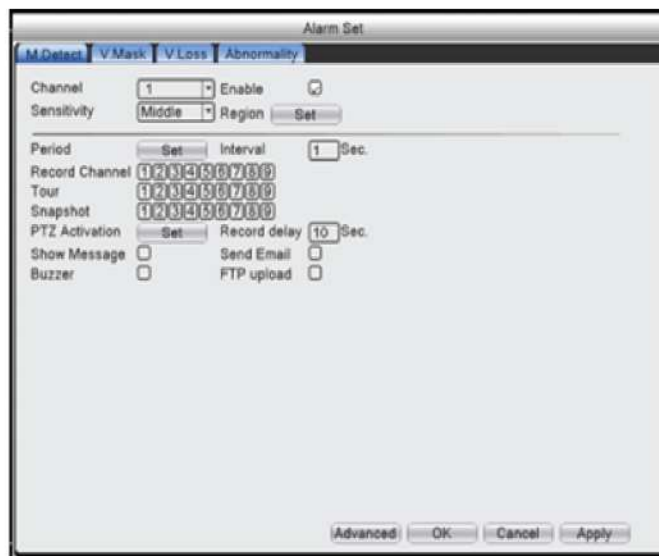
Motion detection is mainly divided into two part:

Alarm function settings of motion detection (enable switch, sensitivity, detection at the time period of arm and disarm and the time interval), that is, how to set to make an alarm .

Linkage settings of motion detection (screen prompts, beep, alarm output and round tour and others that need to be combined with other function settings such as linkage recording and sending Email), that is, how to dispose after the alarm.

You can find the interface of function settings by the following me:

Main Menu] ► [Alarm Set ] ► [Motion Detection]; the interface is as follows]



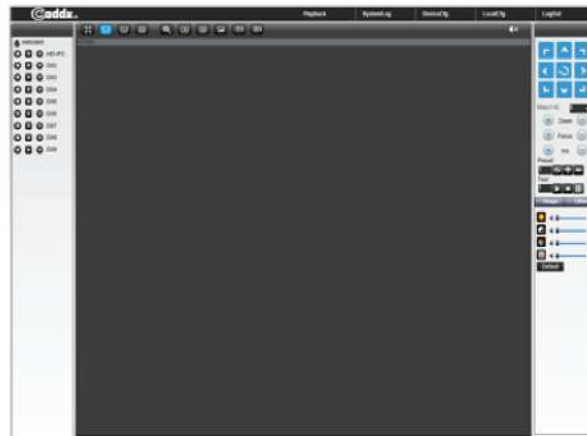
## 7-Local network access

After connect network, access device through IE browser:

Open IE browser, enter device IP in address bar. For example: device IP is 192.168.1.18, then enter http://192.168.1.18 into the address bar to connect .

Enter user name and password, default user name is admin, no password. For safe reason please modify the password. After log in successfully, it will pop up the monitoring interface as below :

# Installation



**Note:** when first log in, you need install ActiveX, IE default stop the ActiveX so please go to <internet option>---<safe>---<custom level>---<ActiveX>, and enable all ActiveX.

## 8-Public network access

Cloud technology make access device in public network easily and conveniently

### 8.1Access by PC

Open IE browser, enter into <http://www.caddxcloud.net> to log in Cloud service network website



### 8.2Access by mobile

Network environment : WIFI, 3G Terminal system : Android, IOS

APP : caddx.us Downloading place : google play , apple stor

The logo for Caddx.us is centered on a dark blue background. It features a large, white, stylized '@' symbol followed by the word 'Caddx' in a bold, white, sans-serif font, and '.US' in a smaller, white, sans-serif font. The background is decorated with several overlapping, 3D-style red and dark red geometric shapes, including triangles and rectangles, creating a dynamic, layered effect.

**@Caddx**.US